

Map #8

Monday:

1. What is the center on the Arctic region polar projection map?
2. On a polar projection, the latitude lines appear as _____?

Tuesday:

1. Which continents are included in the Arctic region?
2. Which special line of latitude runs through northern Asia, northern Europe, and northern North America?

Wednesday:

1. Name at least four labeled seas that are located within the Arctic Circle.
2. Name at least four labeled countries that are located in the arctic region.

Thursday:

1. A polar projection map is an equidistant projection. Do equidistant projections show distance and direction, or size and shape correctly?
2. Which continent is located at 30°E longitude, and which continent is located at 150°W longitude?

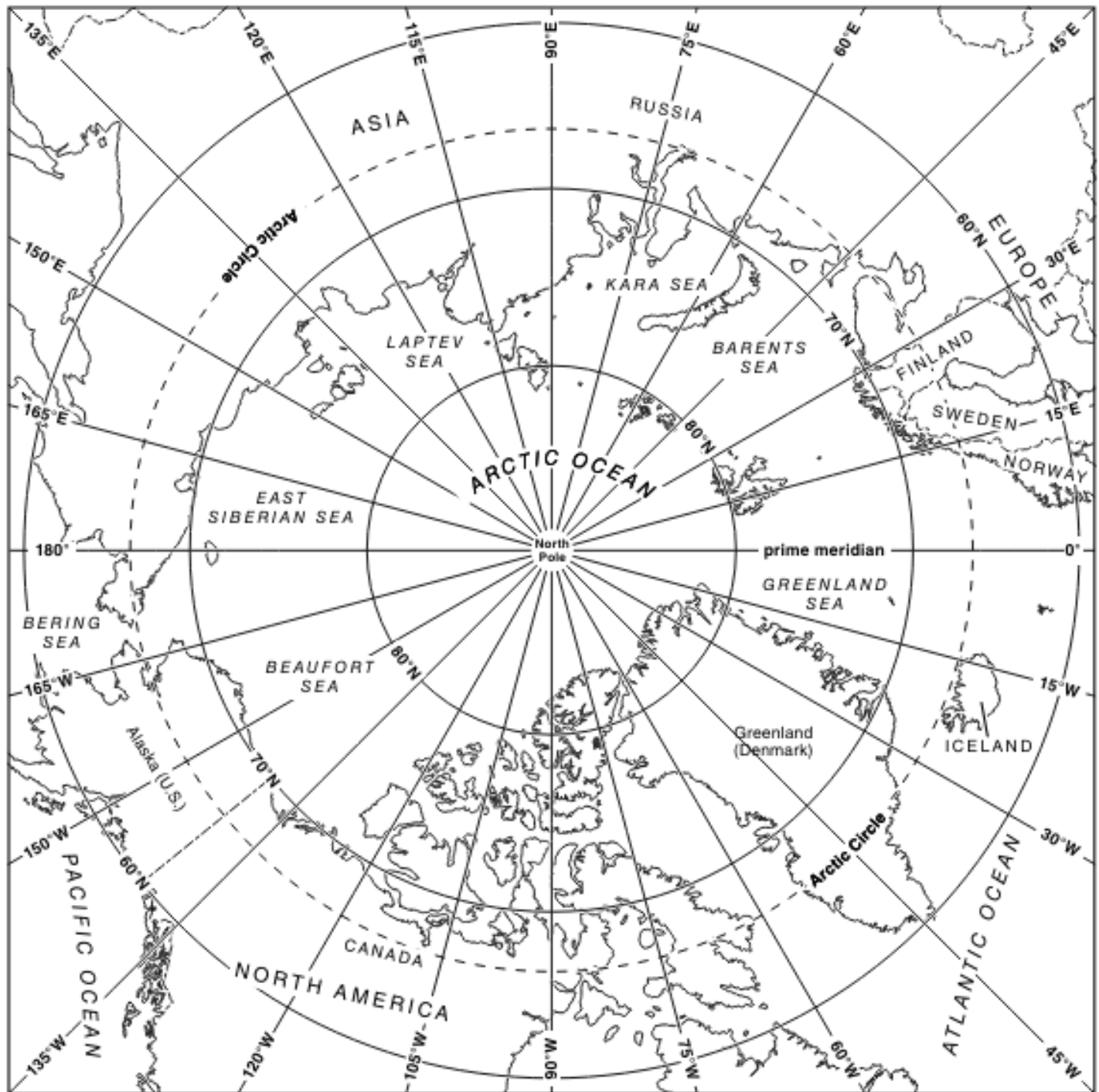
Friday:

1. Which country includes this address: 75°N, 120°W?
2. What is the latitude of the northernmost point in the United States?

Challenge:

Write two questions about the polar projection of the Arctic region. Be sure to include your answers.

A Polar Projection: The Arctic Region



A polar projection is called an equidistant projection. Equidistant projections show land and water in relation to a central point. Equidistant projections show distance and direction accurately. Size and shape become increasingly distorted as you move away from the center.